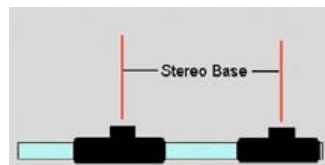


CHICAGO STEREO CAMERA CLUB MY FIRST STEREO CARD (using a single digital camera)

CHA CHA METHOD WITH A SINGLE CAMERA Non-stereo cameras can take stereo pictures! Stereo pairs can be taken by the simple method of shoot, shift, and shoot.

Just shift the camera about 2 ½ inches by shifting your weight from your left foot to your right, between exposures. The camera must be held level and the shift should be done horizontally with essentially no up or down movement. It is best not to have any movement in the scene between exposures. Even a slight movement of the leaves on a tree will stand out in stereo. A slide bar leveled on a tripod would give better results than hand holding the camera.

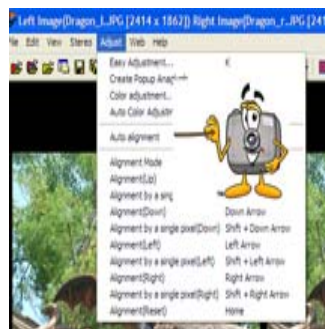


Open SPM and load left and right
FILE -> OPEN LEFT/RIGHT IMAGES

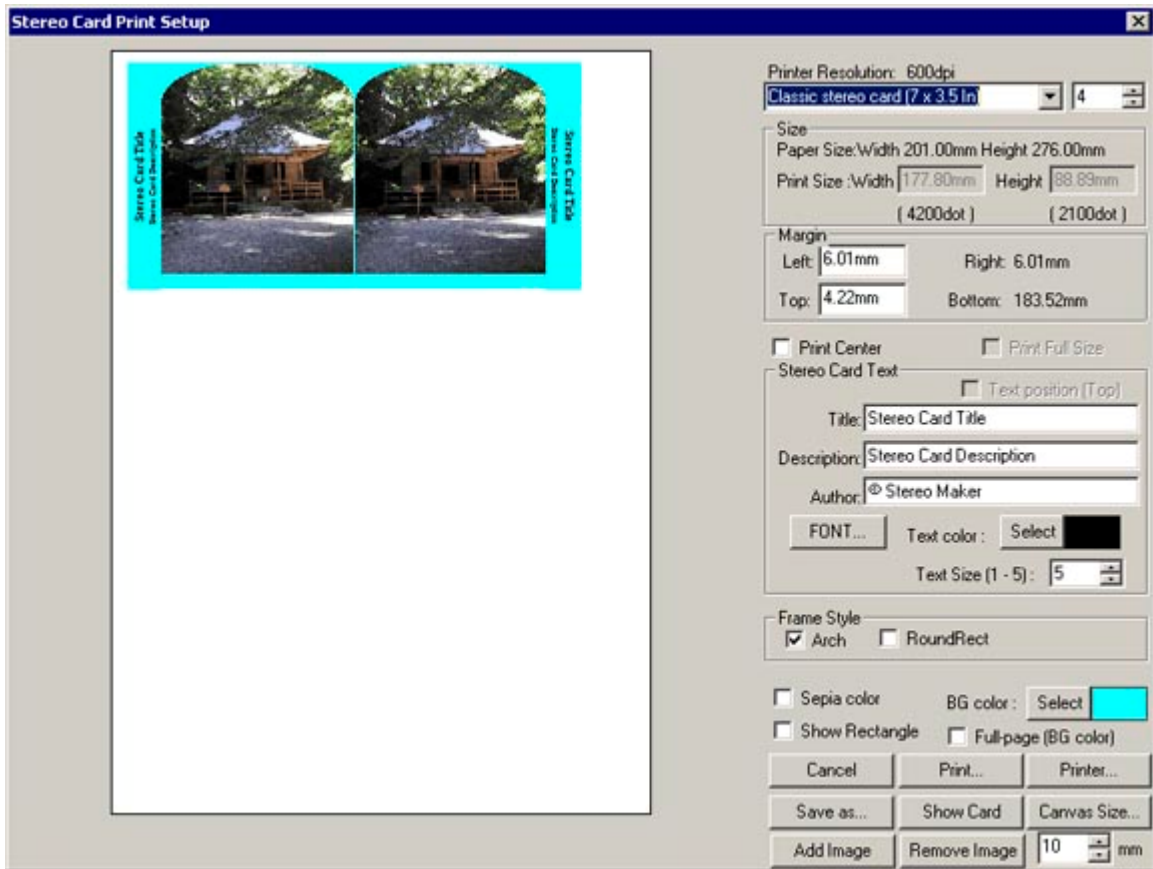
GO TO ADJUST -> AUTO ALIGNMENT

Give the program a few minutes to run. Pop up screens will come on during the process. When auto alignment is finished, click CLOSE.

(If auto alignment doesn't work: 1) you didn't download or install autopano or 2) you installed it but NOT in the stereomaker directory. You can still create an anaglyph, view Adjusting the 3D effect page.)



Click FILE -> PRINT STEREO CARD and you will see a new screen
Just click PRINT – ** These are just the very basic first steps. Separate help pages will show you more options. Feel free to experiment with Frame style, BG (background) color, titles, or printer resolutions for different types of cards.



CHICAGO STEREO CAMERA CLUB

☑ Click FILE -> SAVE STEREO IMAGE

