

CHICAGO STEREO CAMERA CLUB

60th Lighthouse International Exhibition of Stereo Photography

November 21, 2008 IIT Rice Campus, Wheaton

November 22, 2008 Oakton Community College, Skokie

*Program
Welcome
Chicago Slides
Tribute to Bill Lange
Intermission
Lighthouse Show
Awards*

(Cards on exhibition at display table)

In March, 1952 - when stereo photography was on everyone's mind - the Chicago Lighthouse for the Blind sponsored a "Snow Ball", an annual fund-raising event. A feature of the intermission was an invitational exhibition of 3-D photography. Well-known personalities, including actor Harold Lloyd and the drugstore chain's Myrtle Walgreen, were invited to exhibit. Many members of the Jackson Park Camera Club's 3-D section also exhibited.

The "Snow Ball" became the foundation stone of the Chicago Stereo Camera Club. A group of stereographers under the guidance of Robert L. McIntyre, Camera Editor of the Chicago Tribune, organized the club with hosting the Chicago Lighthouse International Exhibition of Stereo Photography as one of its primary purposes. The club joined the Photographic Society of America with the result that shows had to be conformed to meet PSA's rigid exhibition standards. Workshop parties were held often and club members attended not only to participate but to support, serve and cheer those who were doing the work. At public presentations, ladies of the club wore gowns and the gentlemen dressed accordingly, a sign of the lofty position the club held in Chicago society.

Today, the Chicago Lighthouse International Exhibition of Stereo photography is proud to be listed as one of the longest continuing contributor to the Chicago Lighthouse.

LIGHTHOUSE 2008 STATISTICS

CARDS	STATE	entries	accepted	honors
AL		4	1	
CA		16	6	1
DE		4		
FL		8	3	1
IA		4	1	
IL		28	10	2
KS		4		
MD		4	1	
NY		4	1	
OR		4	3	2
SC		4	4	
WI		8	5	2
CANADA		4	1	
ENGLAND		4	3	
GERMANY		8	8	1
PAKISTAN		4		
TOTALS		112	47	9

SLIDES	STATE	entries	accepted	honors
AL		4	3	
CA		28	18	5
CO		4	1	
FL		4	3	1
IA		8	1	
IL		44	12	2
KS		4		
MD		4		
MI		8	5	2
MN		4	1	
NY		4	4	2
OH		4	4	2
OR		4	2	1
SC		4	1	
TN		4	1	
VA		8	2	
WA		4	4	1
WI		12	3	
AUSTRALIA		4	2	1
CANADA		4	3	
ENGLAND		8	6	
GERMANY		8	4	1
TOTALS		180	80	18

CARDS

David W. Allen **** Beaverton, OR <i>"Kuzn" Merlin and Harley - 2 Stereoscope and Horse</i> Best of Show <i>Bread Basket - 2</i> Honorable Mention	Richard Eveleth * Highland Park, IL <i>Fish Sculpture - Disney World Stone Mountain Lift</i>	Elizabeth Mitofsky Lincolnwood, IL <i>Waiting for Riders Webs in the Rocks Peace Rose Pumpkin Stack</i> Honorable Mention
John C. Ballou Orinda, CA <i>Flags, Berkeley Kite Festival Return from Angel's Landing Point Lobos</i>	Ron Fredrickson Master 7 Roseville, CA <i>Venetian Holiday</i>	Nicholas Muskovac APSA EPSA ** Palm Harbor, FL <i>San Xavier Repair</i>
Steve Bezark Wilmette, IL <i>Board Walk</i> Honorable Mention	Dr. Harold Jacobsohn Mequon, WI <i>Warm Up Model Airplanes Bird's Nest Galveston Harbor</i> Honorable Mention	H. Lee Pratt FPSA Master 5 Madison, AL <i>Pacific Splash</i>
Robert Bloomberg ***** Forest Knolls, CA <i>Peppers!</i> Lighthouse Medal <i>Going Up</i>	Dr. Peter H. Jacobsohn Mequon, WI <i>Winter 2008</i> Lighthouse Medal	Chris Reynolds **** Surfside Beach, SC <i>St. Nectan's Kieve Cumulus Rising Monument Valley Dali Havidson</i>
Bruno Braun EFIAP EPSA Master 7 Kassel, GERMANY <i>Blond Zwei Pinguine Brassband Jagderfolg</i>	Klaus Kemper PPSA ***** Nideggen, GERMANY <i>Eremitage</i> Honorable Mention <i>Hybiscus Children Double Face</i>	Albert L. Sieg Hon. PSA FPSA EPSA Master 19 Rochester, NY <i>Windmill</i>
Michael Cosentino Chicago, IL <i>Music Machine Ruby Falls Italian Alps</i>	Robert James Leonard FPSA EPSA Master 4 Deale, MD <i>Slot Canyon Light</i>	Cecil A. Stone **** Orlando, FL <i>Paula in B & W</i> Lighthouse Medal <i>Mommy and Me</i>
Brian Davis ** Wingerworth, Chesterfield, Derbyshire, UK <i>The Gatehouse, Lanhydrock Abbey, UK Italian Side Street The Forge, Fontenay Abbey, France</i>	Edgar Lower APSA EPSA ***** Davenport, IA <i>LaSalle Spare Tire</i>	(stars indicate PSA rating)
	Jean-Pierre Melaye * Sudbury, Ontario, CANADA <i>Blue Sea</i>	

2008 Lighthouse Committee:

Chairman: Suzanne Kiredjian

Judges:

Eugene Mitofsky*** Lincolnwood, Illinois

Christopher Schneberger Chicago, Illinois

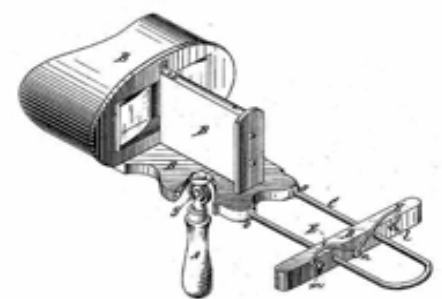
Tom Strelau Chicago, Illinois

Script Writer: Russ Gager

Narrator: Craig Zaplatynsky

Recording Technician: Tom Strelau

Slide/Card Chairmen: Pat Gager and Suzanne Kiredjian



Judging and Show Productions: Emily Deam, Pat and Russ Gager, Rose Grobstein, Suzanne Kiredjian, David Konczal, Ronald Kostecka, Eugene and Elizabeth Mitofsky, George Philosophos, Don Smith FPSA, Marion Smith FPSA, Tom Strelau, and Bill Wehmeier

CHICAGO STEREO CAMERA CLUB WEBSITE

<http://www.geocities.com/stereophotography/>

SLIDES

Thaddeus Adamczyk
Chicago, IL
Royalty

David W. Allen ****
Beaverton, OR
*Glass Orb **Best of Show***
Pink Orchid Closeup

John C. Ballou
Orinda, CA
Garnet Lake
Sunrise at Thousand Island Lake
Honorable Mention
The Rocket's Red Glare
Waugh Lake

Robert Bloomberg *****
Forest Knolls, CA
Giraffe In Your Lap
*Stairwell, NYC **Lighthouse Medal***
*Man to Mandril **Humor Award***

Bruno Braun EFIAP EPSA Master 7
Kassel, GERMANY
Zygaenen
*Mount Cook **Lighthouse Medal***

Brian Davis **
Wingenworth, Chesterfield,
Derbyshire, UK
Cloisters, Fontenay Abbey
Sunflower
Winter Walkway

Ron L. Fredrickson Master 7
Roseville, CA
Red Ramp
*Curlicues **Macro Flower Award***
Highest Sierra
*Hungry One **Honorable Mention***

Pauline Fredrickson Honorable PSA
FPSA Mster 5
Roseville, CA
Busy Penguin

Pat Gager
Chicago, IL
*Reflection of Painted Mural **CSCC Award***

Russ Gager
Chicago, IL
Paris Picnic
Bryce Morning
Reflecting on Mt. Renier
4 Queens Flaming

Barbara Gauche
Macomb, MI
Effortless
*Whirlygigs **Honorable Mention***

Dennis Green *****
Ferndale, MI
Giraffe Through a Window
Honorable Mention
Night Tigers
Blue Flower

Byron Hindman FPSA Diamond
Cool, CA
Whitewater at Red Rock
Gold at the Mill
Twisted

Marilyn Hindman APSA ***
Cool, CA
Tufa Towers
Bristle Cone Country

Neville Jackson APAGB
Hinckley, Leicestershire, UK
Midnight Sun
Evening Light
Venetian Back Street

Dr. Harold Jacobsohn
Mequon, WI
Go-Fly-A-Kite
Dirty Books

Dr. Peter Jacobsohn
Mequon, WI
Temple of the Frescos-Tulum

Lawrence Kaufman ****
Corona, CA
On the Wing

Klaus Kemper PPSA *****
Nideggen, GERMANY
Zwitscher Heupferd
Macroglossum Stellatarum

Ron Kostecka
Chicago, IL
A Horse of Course
In The Bullpen

Allan Lange ****
St. Paul, NM
On a Clear Day

Edgar Lower APSA EPSA *****
Davenport, IA
Pink Lillies #1

Jean-Pierre Melaye *
Sudbury, Ontario, CANADA
Sugar Shack
Canada Geese

Elizabeth Mitofsky
Lincolnwood, IL
Cactus Path

David K. Morison APSA Master 6
Grand Junction, CO
Where's the Hold?

Geoff Peters ****
Fairfax, VA
Solitude

George Philosophos
Summit, IL
Reflections at St. Mary

H. Lee Pratt FPSA Master 5
Madison, AL
Discarded Limb With Beam
Waterfall Log
Rainbow in the Gorge

Andrew Read ***
West Pennant Hills, NSW, AUSTRALIA
Pipe Dreams
Rugged Coastline
*Local Fisherman **Honorable Mention***

Chris Reynolds ****
Surfside Beach, SC
Teardrop Arch

James Roy FPSA PPSA Master 5
Falls Church, VA
Corkscrew Canyon Light

Andrea Shetley APSA ***
Fayetteville, TN
Oregon Tidal Pool

Albert L. Sieg Hon. PSA FPSA EPSA
Master 19
Rochester, NY
Red Lips
*Red Window **Honorable Mention***
*Man and Best Friend **Lighthouse Medal***
Ghostly

Marion Smith FPSA ***
Wheaton, IL
Glassworks
*Tall 'n Small **Honorable Mention***

Cecil A. Stone ****
Orlando, FL
Michelle at Thompson #1
Indian Princess
*Canyon Concert #1 **Creative Award***

George Themelis ****
Brecksville, OH
*Tourist's View **Lighthouse Medal***
Through the window
Olympic Arch
*Say Fish **Portrait Award***

Bob Venezia **
Seattle, WA
Mesa Arch Sunrise #2
Sinbad Full Tilt
*Skydiver Detail #5 **Honorable Mention***
Bryce Trail #4

(stars indicate PSA rating)

THE CHICAGO LIGHTHOUSE

Since 1906, the Chicago Lighthouse has been creating opportunities which enable people who are blind, visually impaired or blind with additional disabilities to assume their rightful place in society.

With a broad base of corporate, foundation and individual support, hopes become reality every day at the Lighthouse: a child takes a first step toward independence with a white cane; a senior citizen lives independently with special visual aids.

The Vocational Evaluation Center assists Chicago area people who are blind or visually impaired to assess their own abilities, interests and potential. Newly blinded adults may go to The Chicago Lighthouse to learn to adjust, obtain career guidance and learn new job skills. The Chicago Lighthouse teaches both office and industrial skills and their employment placement service continues to successfully set national records.

The Children's Development Center in The Chicago Lighthouse trains and nurtures children with handicaps so severe that they can not attend regular schools. The Lighthouse is a national leader among agencies that create opportunities for people with visual impairments. As society, technology and the demands of the job market change, so do the initiatives and goals of the Lighthouse.

The Chicago Lighthouse's Executive Director, Jim Kesteloot, will retire in January 2009. Jim started at the Lighthouse 40 years ago as a job placement counselor, and rose to higher levels of responsibility including Director of Lighthouse Industries in the mid '70's. He was Assistant Executive Director when Milt Samuelson died in 1996 and succeeded him as Executive Director. Jim will remain on the board of directors as President throughout 2009.

The new Executive Director started in August, Dr. Janet Szlyk. Dr. Szlyk was selected from an outstanding group of candidates from across the country to continue the strong leadership tradition of The Lighthouse. She came to the Lighthouse from the University of Illinois - Chicago Department of Ophthalmology & Visual Sciences where she was a full Professor and Director of Low Vision Research. Dr. Szlyk also had appointments in the Departments of Psychology and Bioengineering, and the Rehabilitation Research and Development Service of the U.S. Department of Veterans Affairs.

Entry fees and donations received at public showings of this salon have supplied some of the funds required for non-grant items essential to the operation of The Chicago Lighthouse. The Chicago Stereo Camera Club is proud to be the sponsor and contributor for the sixtieth consecutive year.

A voluntary contribution, in addition to your ticket purchase, will help continue the good work. We thank you for your support.

Please take a virtual tour of The Lighthouse at www.thechicagolighthouse.org.

The Chicago Lighthouse for People Who Are
Blind or Visually Impaired

1850 West Roosevelt Road, Chicago, IL 60608
312-666-1331 TTY (312) 666-8874



The sponsors of this International Exhibition of Photography have been awarded Recognition by PSA, the world's largest patron of international photographic exhibitions.



Acceptances received by PSA members in approved sections of this exhibition are eligible for PSA Star Ratings, listing in the worldwide PSA Who's Who of photography, and credited toward the PSA Distinctions PPSA and EPSA.

PSA is a non profit organization promoting the advancement of photography in all its forms to novice, amateur and professional photographers worldwide.

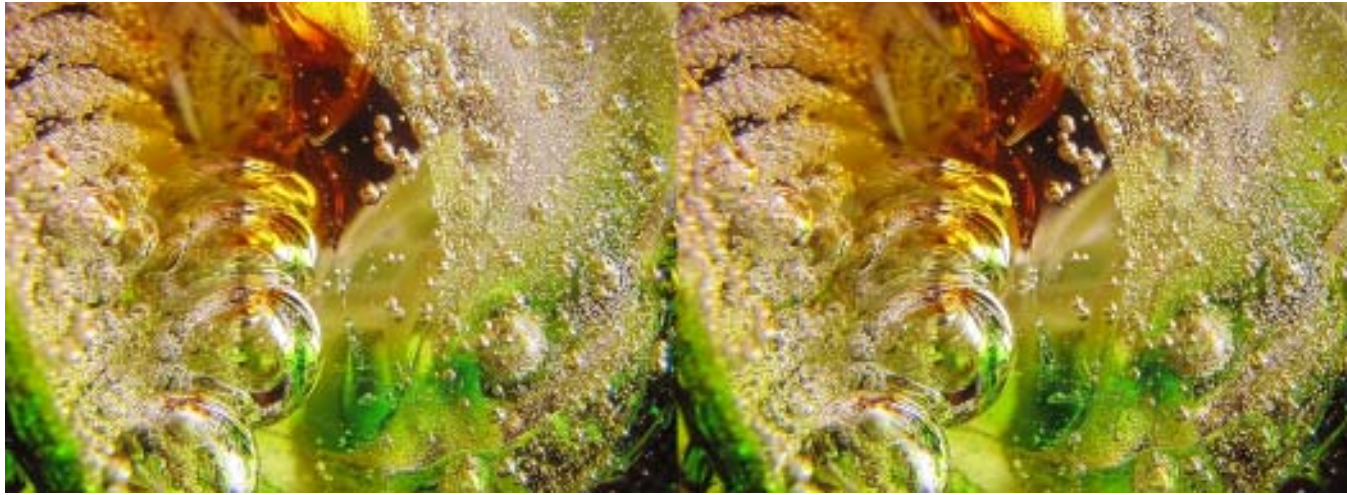
For information on membership and the many services and activities of PSA, contact:

psa
PHOTOGRAPHIC SOCIETY OF AMERICA
3000 United Founders Blvd. Suite 103
Oklahoma City, OK 73112 -3940, U.S.A.
E-mail: hq@psa-photo.org
Web Site: <http://www.psa-photo.org>

**2009 Conference will be held at West Yellowstone, MT
Sept. 20 - 26, 2009**

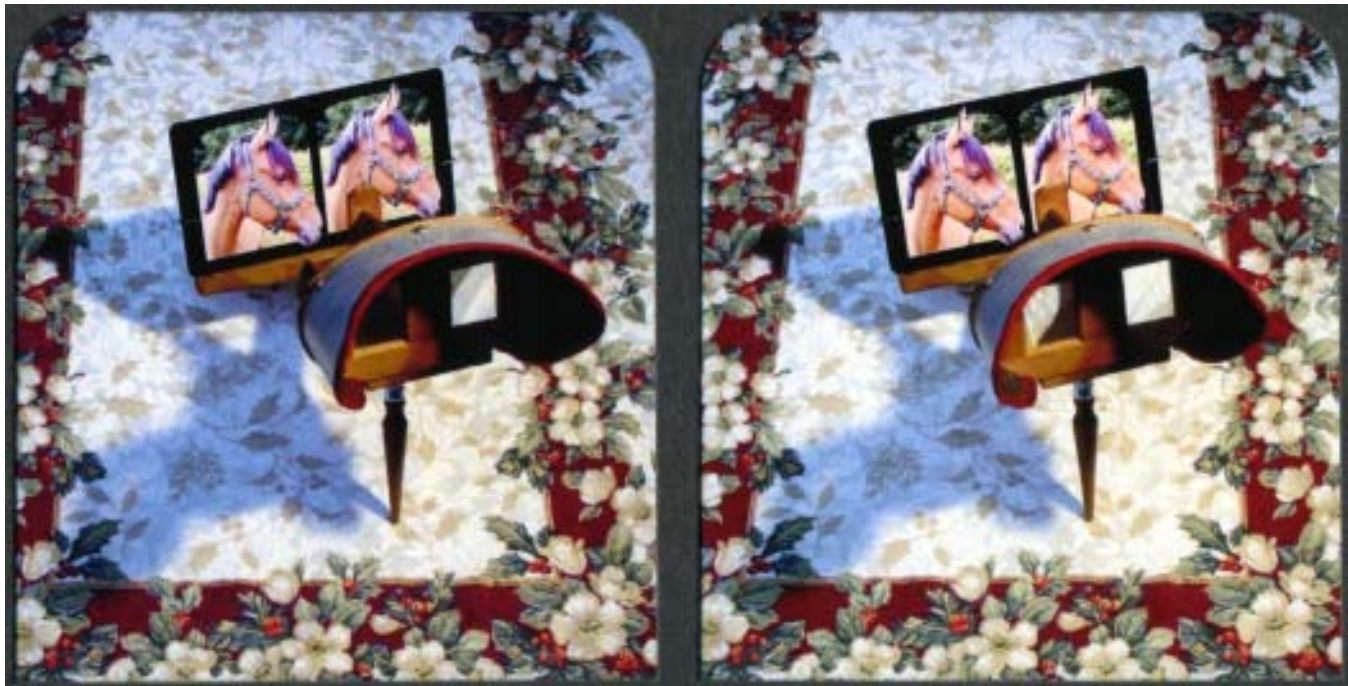
We greatly appreciate the donations and/or reduced costs from the following companies and organizations:

Locations: IIT Rice Campus, Wheaton, Oakton Community College, Skokie
Printing: FedEx Kinko's Printing, Lincolnwood
Engraving: Arman Jewelers, Lincolnwood Town Center Mall
3D Glasses: 3DStereo.com, Inc.



Glass Orb
Slide Best of Show

David W. Allen ****
Beaverton, OR



Stereoscope and Horse
Card Best of Show

David W. Allen ****
Beaverton, OR