

http://stereo.jpn.org/

Welcome to Muttyan's Home Page (Main)

Muttyan's Home Page

Please click the national flag !

[\[Main Site \(http://stereo.jpn.org/\)\]](http://stereo.jpn.org/)

 日本語  English  German  French

[\[Mirror Site \(http://www.stereomaker.net/\)\]](http://www.stereomaker.net/)

 日本語  English  German  French

79550

Muttyan's Home Page

StereoData Maker	StereoData Maker(SDM) provides on-screen stereo information for save the data to file. (developed by David Sykes) (21/Feb/2010 update)
StereoMovie Maker	Stereo Movie Maker functions both as a versatile stereo movie editor (19/Dec/2010 update)
StereoMovie Player	Stereo Movie Player functions as a DirectShow stereo movie player (26/May/2010 update)
StereoPhoto Maker	Up Date! StereoPhoto Maker(SPM) functions as a versatile stereo (10/JUL/2011 update)
StereoSlide Show	StereoSlide Show (SSS) displays still images and movie clips according to effects. (26/May/2010 update)
Stereo Galleries	Stereo Galleries , Stereo Movie Samples , Popup Anaglyph Samples (31/Jan/2010 update)
Stereo WEB Browser	Stereo WEB Browser MISAKI functions as a WEB page stereo viewer (29/Mar/2009 update)
Stereo GE Browser	Stereo GE Browser functions as a google earth stereo viewer. (22/Mar/2009 update)
Stereo Google Earth	Stereo Google Earth is a side-by-side WEB page. (07/Mar/2009 new)
Stereo Panorama	360 degree Stereo Panorama AutoScroll JavaScript (10/Jun/2006 update)

Muttyan's Home Page

Download

[Stereo SlideShow Ver0.32](#) 988kByte 26/May/2010

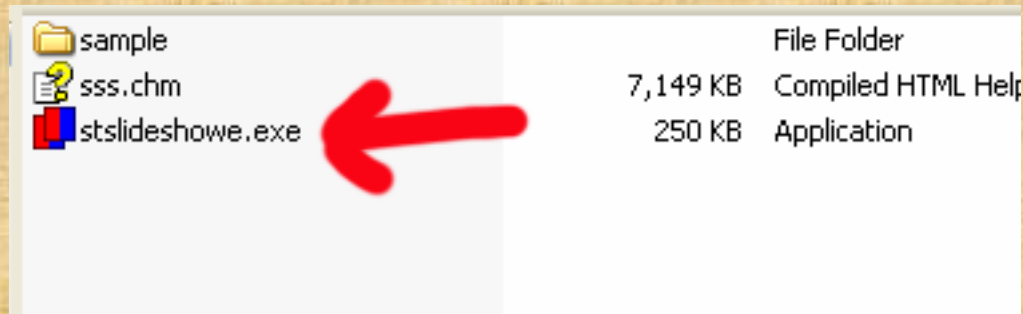
[Stereo SlideShow Help File for Ver0.30](#) 7143kByte 11/Feb/2010

[Online help](#)

Ver0.31 -> 0.32

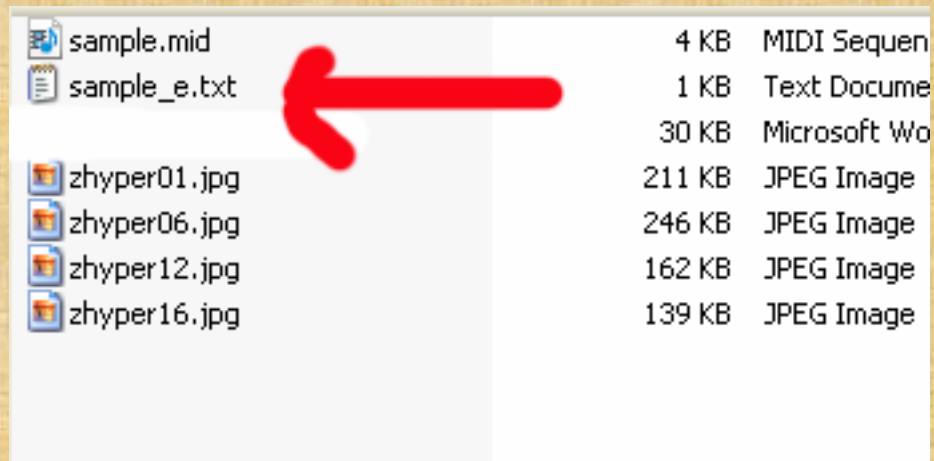
Create a directory, I created a slideshow Folder inside of the programfiles directory. Download both and unzip.

Inside the folder....



sample	File Folder
sss.chm	7,149 KB Compiled HTML Help
stslideshowe.exe	250 KB Application

Inside of the sample folder



sample.mid	4 KB MIDI Sequen
sample_e.txt	1 KB Text Docume
	30 KB Microsoft Wo
zhyper01.jpg	211 KB JPEG Image
zhyper06.jpg	246 KB JPEG Image
zhyper12.jpg	162 KB JPEG Image
zhyper16.jpg	139 KB JPEG Image

**Double click and open the txt file.
This is a sample script.**

Sample script opened in text writer program

```
SlideShowList;; //Stereo SlideShow File List
BGMusic; sample.mid;;
//MovieBGMStop; 1;;
Repeat; 1;; //Repeat:ON
SlideShow; 1;; //SlideShow:ON
StereoEffect; 1;; //StereoEffect:Random
StereoType; 15;; //StereoType:Dubois Anaglyph
ScreenSize; 1;; //CanvasSize:Screen size
//Disp Width; 1024;;
//DispHeight; 768;;
Font; Times New Roman;; //Font:Times New Roman
Comment; 1;; //Comment:ON
CommentSize; 5;; //CommentSize:Canvas height x 5%
Floatingwindow; 0;; //Floatingwindow:Canvas Width x 0%
11;35;0;0;0; zhyper01.jpg;Linz, Austria;;
11;35;0;0;0; zhyper06.jpg;Salzburg, Austria;;
11;35;0;0;0; zhyper12.jpg;Neuschwanstein, Germany;;
11;35;0;0;0; zhyper16.jpg;Praha, Czech;;
```

1

2

3

4

5

6

```
BGMusic;sample.mid;;  
//MovieBGMStop;1;;
```

```
BGMusic;sample.mid;;
```

This is the name of a background music file, which should contain the full-path name if not located in the same folder script and photos.

e.g. BGMusic;F:\MyMusic\beethoven.mid;;

Any music files that play on your system with MediaPlayer (wav,mid,mp3,etc) should be suitable.

[Return](#)

Repeat;1;;
SlideShow;1;;

//Repeat:ON
//SlideShow:ON

0 OFF, do not repeat slideshow
1 ON, endlessly repeat slideshow

SlideShow;1;; //SlideShow:ON

0 OFF, turn slideshow off
1 ON, turn slideshow on

[Return](#)

StereoEffect;1;; //StereoEffect:Random

StereoEffect;1;; //StereoEffect:Random

0 No Effect

1 Random

2 Slide

3 Perspective

4 Dissolve

5 Globe

6 Roller

Return

StereoType;15;;

//StereoType:Dubois Anaglyph

StereoType;15;; //Stereo viewing method

0 Side-by-side

1 Mirror Left

2 Mirror Right

3 Mirror Both

4 Above/Below

5 Mirror Top

6 Mirror Bottom

7 Mirror Both

9 Gray Anaglyph(red/cyan)

10 Gray Anaglyph(red/green)

11 Gray Anaglyph(red/blue)

12 Gray Anaglyph(yellow/blue)

13 ColorAnaglyph

14 Half ColorAnaglyph

15 ColorAnaglyph(Dubois)

16 Color(yellow/blue)

17 Half Color(yellow/blue)

18 Row Interlaced

19 Column Interlaced

20 Sharp 3D LCD

21 3D DLP TV

22 3D VISION

23 IZ3D

24 Single Image View

27 Source Image

[Return](#)

11;35;0;0;0;zhyper01.jpg;Linz, Austria;;

11; 35; 0; 0;0; zhyper01.jpg; Linz, Austria ;;

**The list of images and movies to be used in the show.
The first parameter defines stereo or left/right images :**

11 Stereo image

21 Left/right independent images.

The next parameter is slideshow interval in units of **0.1 seconds.**

The third parameter is left/right swap:

0 do not swap 1 swap left/right

Parameters four and five are reserved.

Parameter **six is the image name.**

Use full path name if not in same folder as SSS.

Your comment follows immediately after image name and may include commas.

All lines end with a double semi-colon.

[Return](#)

MENU/Shortcuts/Mouse

Menu	Sub-menu	Key	Mouse
File	Open Stereo Image...	W	
	Open Left/Right Images...	O	
	Open Slide Show List ...	S	
	Make/Edit a Slide Show list	
	Add JPEG comment...	K	
	Preferences	.	
	Delete most-recently-used files	Ctrl+D	
	Exit	ESC	

MENU/Shortcuts/Mouse

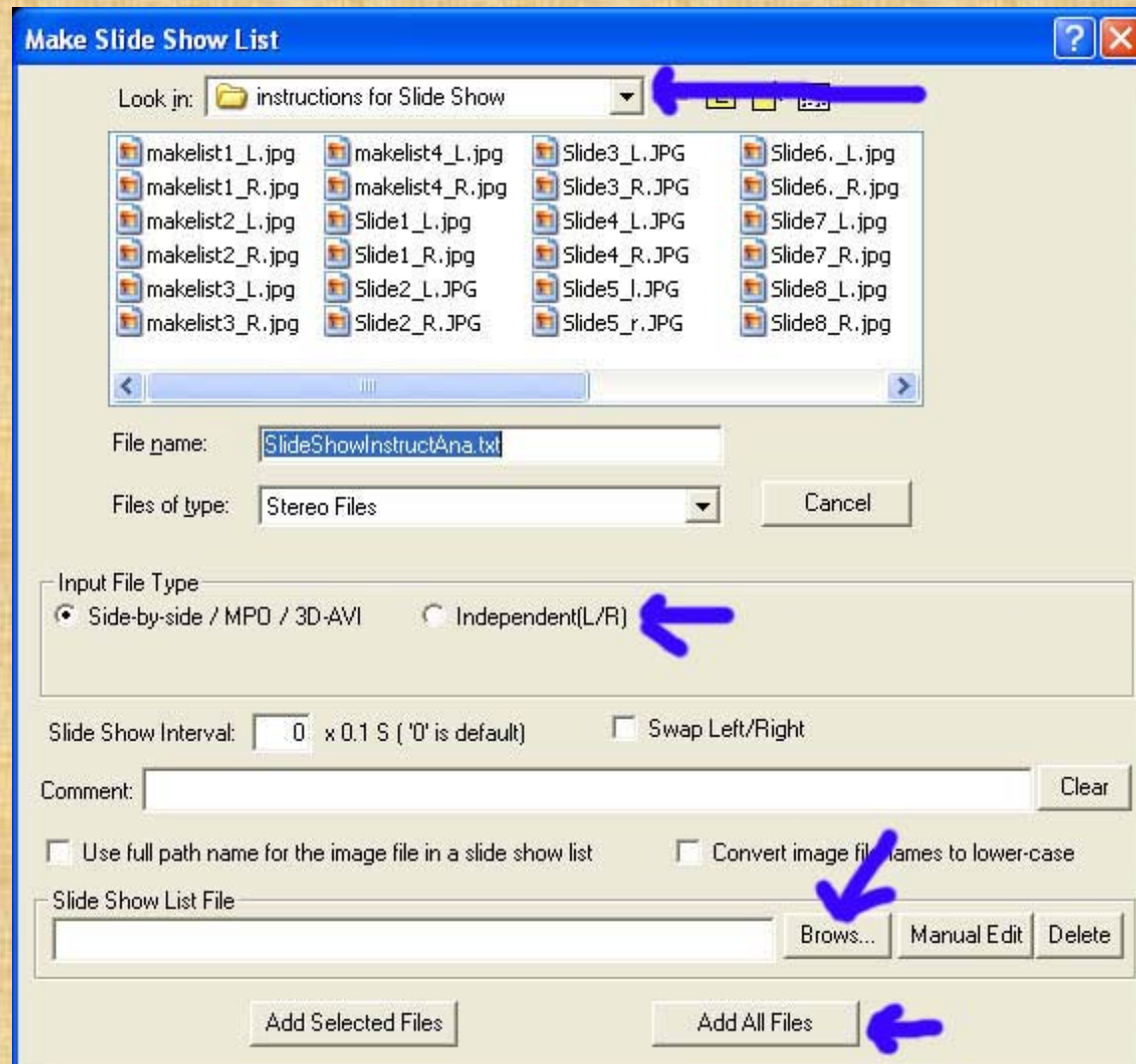
Menu	Sub-menu	Key	Mouse
File	Open Stereo Image...	W	
	Open Left/Right Images...	O	
	Open Slide Show List ...	S	
	Make/Edit a Slide Show list	
	Add JPEG comment...	K	
	Preferences	.	
	Delete most-recently-used files	Ctrl+D	
	Exit	ESC	
	Full Screen	Enter	
	Fit To Window	F	
	Normal size (100%)	J	
	Zoom In	PageUp	Wheel
	Zoom Out	PageDown	Wheel
	Swap Left/Right	X	

F1 brings up these commands

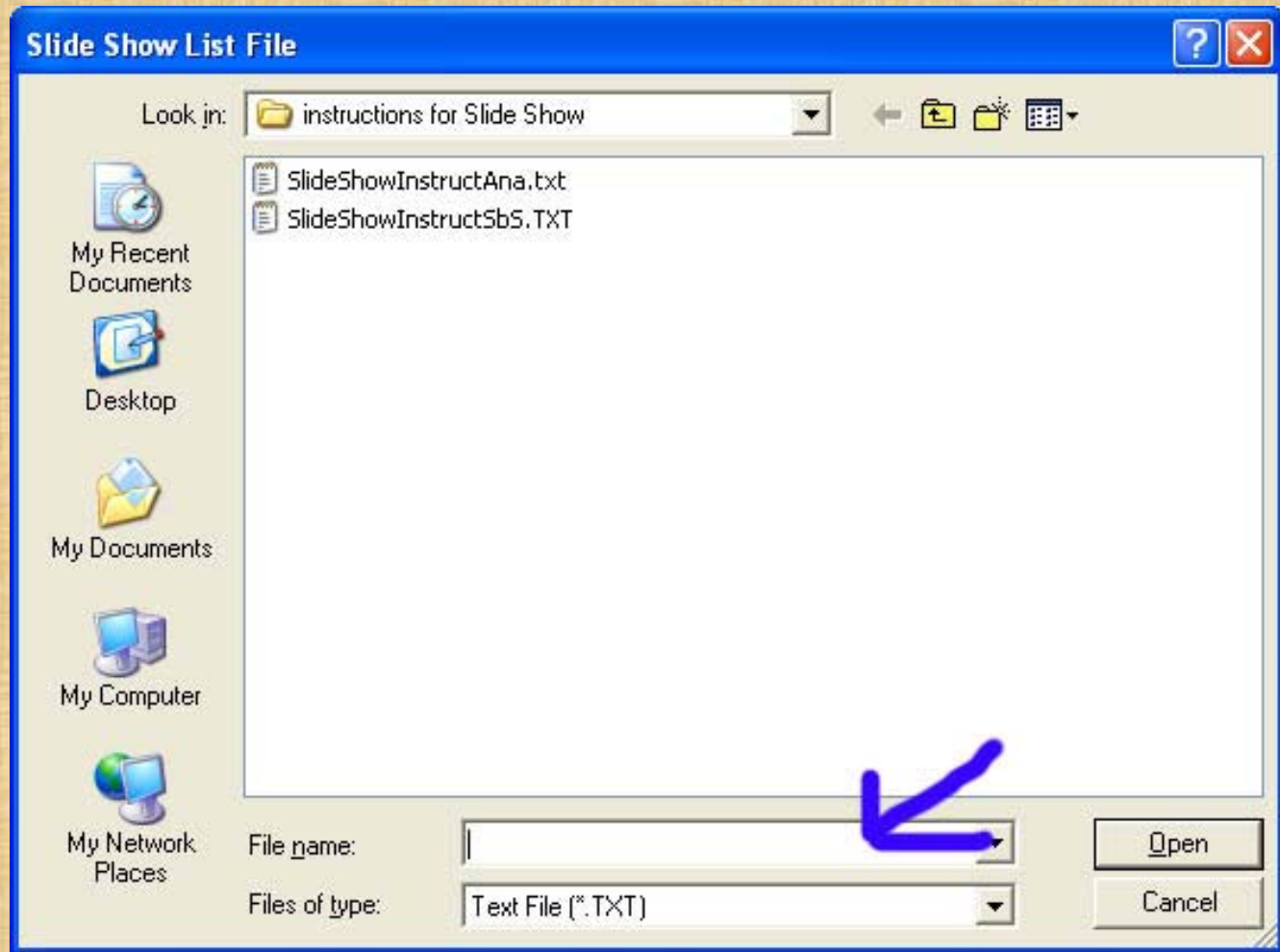
MENU/Shortcuts/Mouse

Menu	Sub-menu	Key	Mouse
File	Open Stereo Image...	W	
	Open Left/Right Images...	O	
	Open Slide Show List ...	S	
	Make/Edit a Slide Show list	
	Add JPEG comment...	K	
	Preferences	.	
	Delete most-recently-used files	Ctrl+D	
	Exit	ESC	
	Full Screen	Enter	
	Fit To Window	F	
	Normal size (100%)	J	
	Zoom In	PageUp	Wheel
	Zoom Out	PageDown	Wheel
	Swap Left/Right	X	

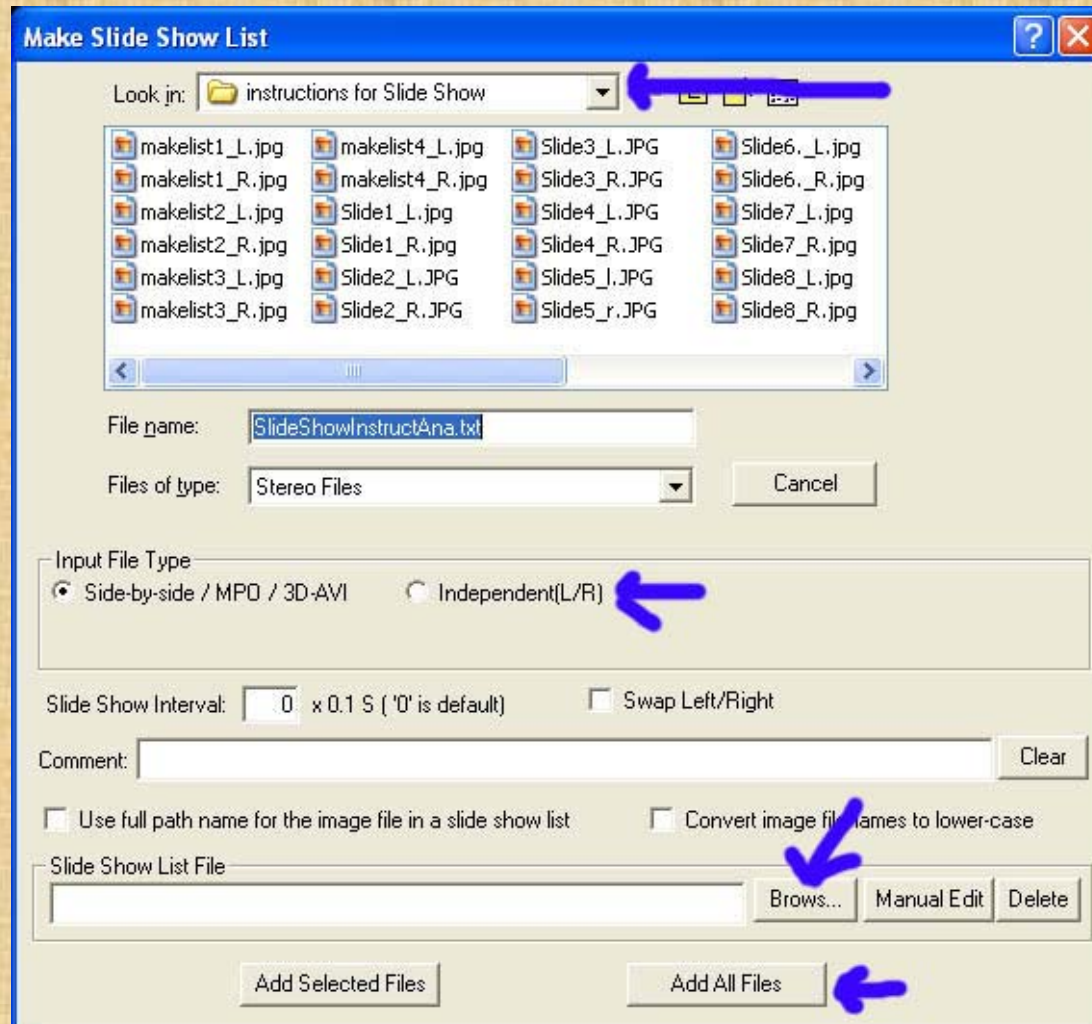
1. Open Stereo Slide Show Program
2. Under FILE choose Make Show List



1. Give Script a title



4. Highlight slides you want, or select all (if you aligned them with SPM, then Click first (shift) last to get all except Alignment folder and choose “add selected)



5. (Preview photos in directory and write down the ‘ ones you want and order) Or use all in directory
6. Move music file into directory (if you want music)
7. Open text editor or drom directory double click the text file
8. Edit file, for anaglyph/side by side
music file
duration of slides
dissolve
9. Save file
10. Open slide show program then FILE open “Open list”